



**INDUSTRIAL  
CLUTCH PARTS LTD**

[www.industrialclutch.com](http://www.industrialclutch.com)



OUR INNOVATION MOVES

# Rexnord Omega & Viva Elastomeric Couplings



Download the most up-to-date version  
at [www.rexnord.com/documentation](http://www.rexnord.com/documentation)



# The Industry Benchmark

Rexnord Omega® and Viva® Couplings are well recognized as the industry benchmark for elastomeric tire couplings. These non-lubricated, material-flexing split-in-half couplings are used in a variety of demanding applications. Omega and Viva have an excellent vibration damping capability, helping to extend the life of your connected equipment. They offer high-misalignment capacity, easy installation, and replace-in-place design while accommodating a wide range of shaft gaps.

## VARIETY OF OPTIONS AND DESIGNS

Omega and Viva Couplings are available in a variety of sizes (metric and imperial) and spacing options (close-coupled, spacer, half-spacer, and extended spacer). These couplings are also available with anti-corrosive coated steel shoes, stainless steel hardware/hubs, spline bore hubs, keyless/internal locking device hubs, and positive drive with interlocking hubs. Omega Coupling elements are available in general purpose Standard Orange, High Density Yellow (HDY), and Hydrolytically Stable Urethane (HSU) Green.

## RESISTANCE TO CHEMICAL & ENVIRONMENTAL AGING

Omega and Viva's specially formulated polyurethane provides superior chemical and environmental aging resistance as compared to competitive rubber-based solutions.

## TORQUE-DENSE FLEX ELEMENTS

Omega High Density Yellow (HDY) and Viva are the most torque-dense elastomeric couplings available. They provide significantly higher torque capabilities than competitive solutions, allowing for possible coupling downsizing and ultimately a lower Total Cost of Ownership (TCO).

## TIME TESTED, PROVEN & TRUSTED PERFORMANCE

The Omega and Viva coupling family has been used for over 45 years in a wide assortment of demanding applications and are recognized in industry as the benchmark for elastomeric split-in-half tire couplings.



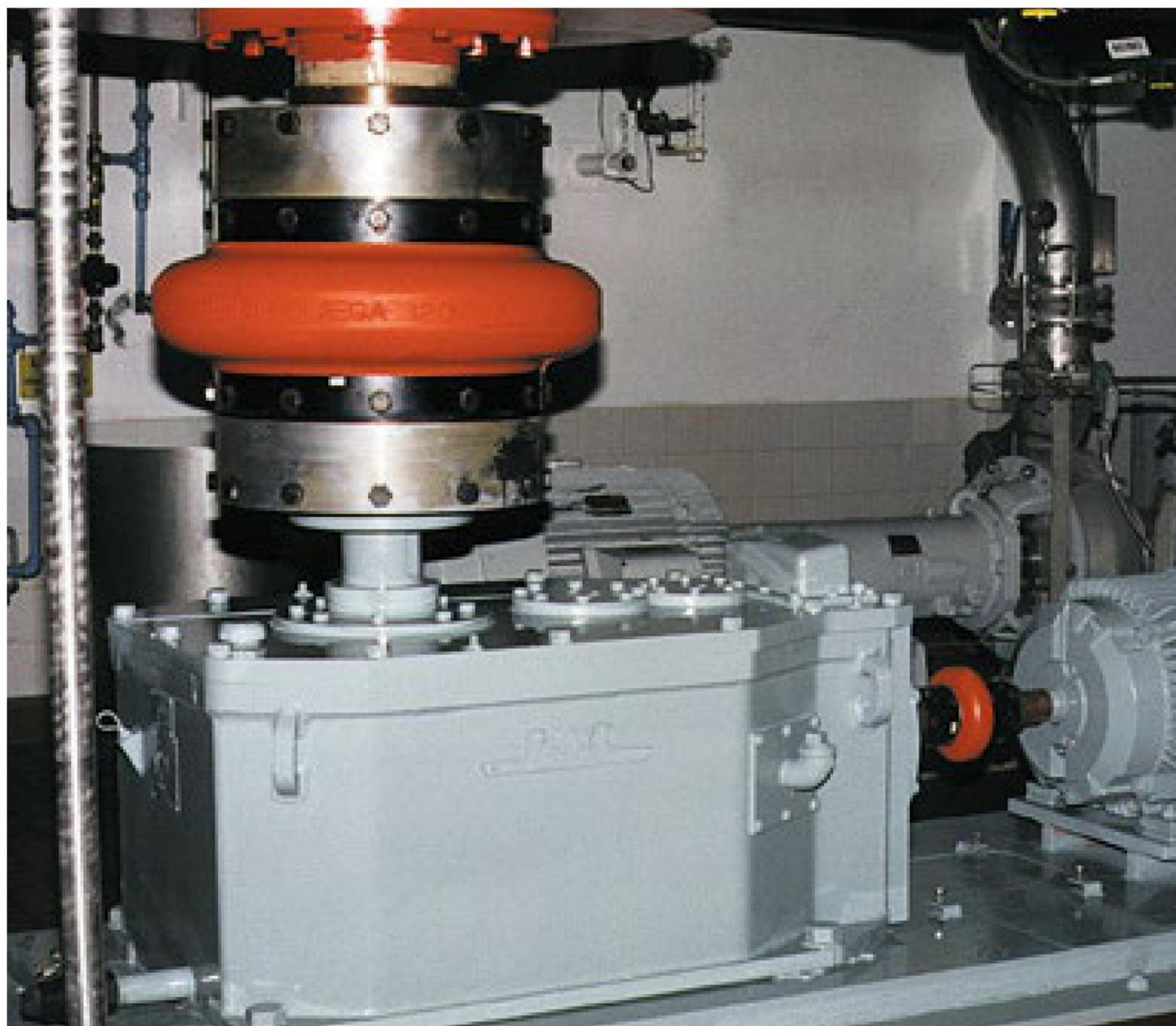
ATEX II 2GD c T5

### Industries:

- Cement & Aggregate
- Paper & Forestry Products
- Construction Machinery
- Metal Processing
- Water & Wastewater
- Material Handling
- General Industrial

### Applications:

- Pumps
- Blowers
- Compressors
- Industrial Fans
- Runout Tables
- Mixers
- Chippers & Saws





# OMEGA & VIVA COUPLING ASSEMBLY

Anti-corrosive coated steel shoe and stainless-steel hardware available with Omega HSU-J Green.

Split-in-half design for easy assembly and replacement without having to remove the hubs or realign equipment.

Polyurethane-to-metal bond minimizes coupling components and eliminates fretting wear between the hub and element associated with jaw and sleeve coupling designs.

Radial bolting provides easier access than axially bolted couplings in a confined design envelope.

Interchangeable hubs between closed coupled and spacer elements allow for reduced inventory.<sup>1</sup>

Two rows of radial holes grant more spacing adjustability.<sup>2</sup>

High-misalignment capacity accommodates unavoidable misalignment with reduced reactionary forces on connected equipment.

Torsionally-soft, weight-balanced flex elements cushion shock loads and vibration to protect connected equipment.

<sup>1</sup> Hubs are not interchangeable between Omega and Viva couplings.  
<sup>2</sup> Two rows of radial holes only available with Viva couplings.

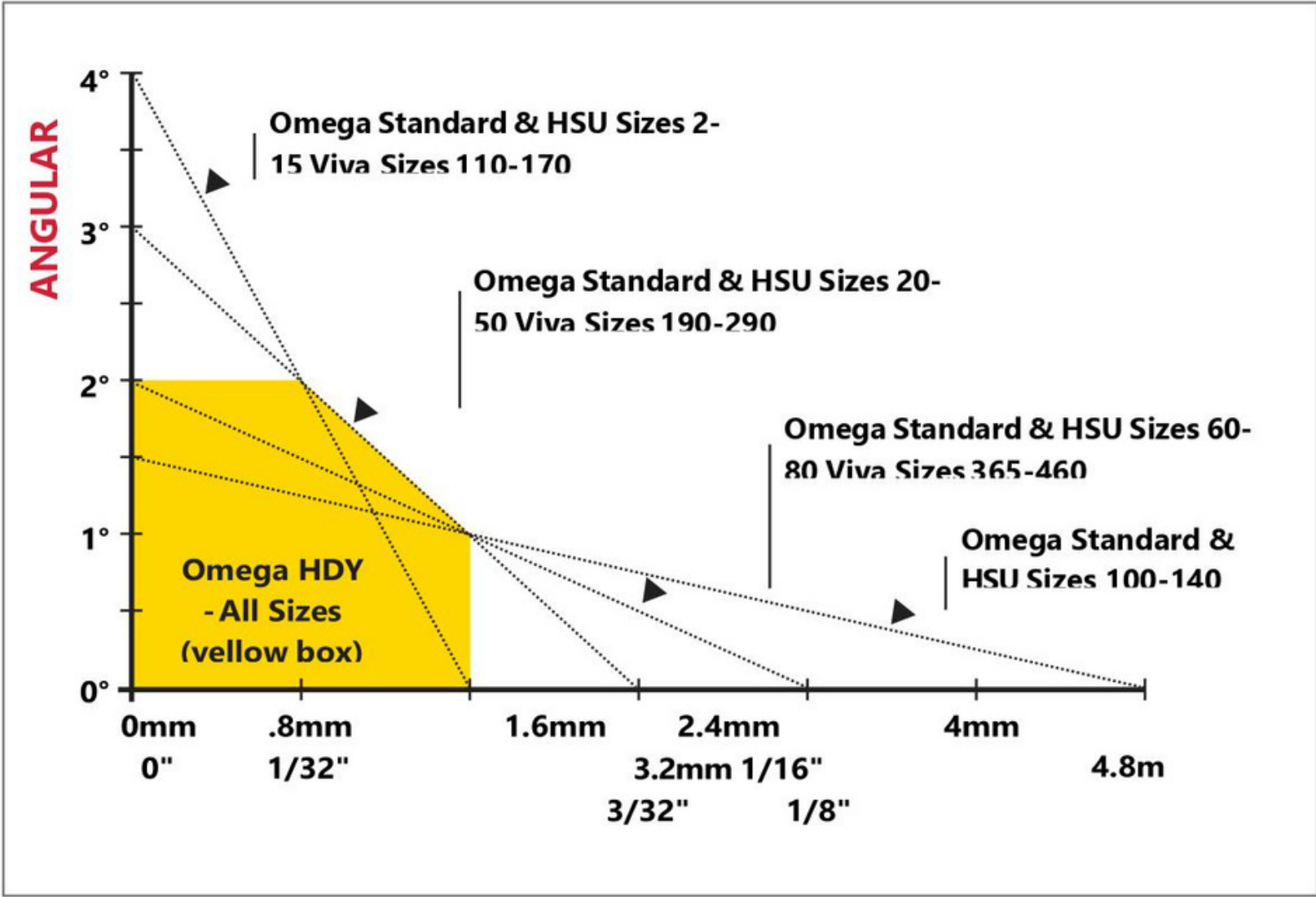
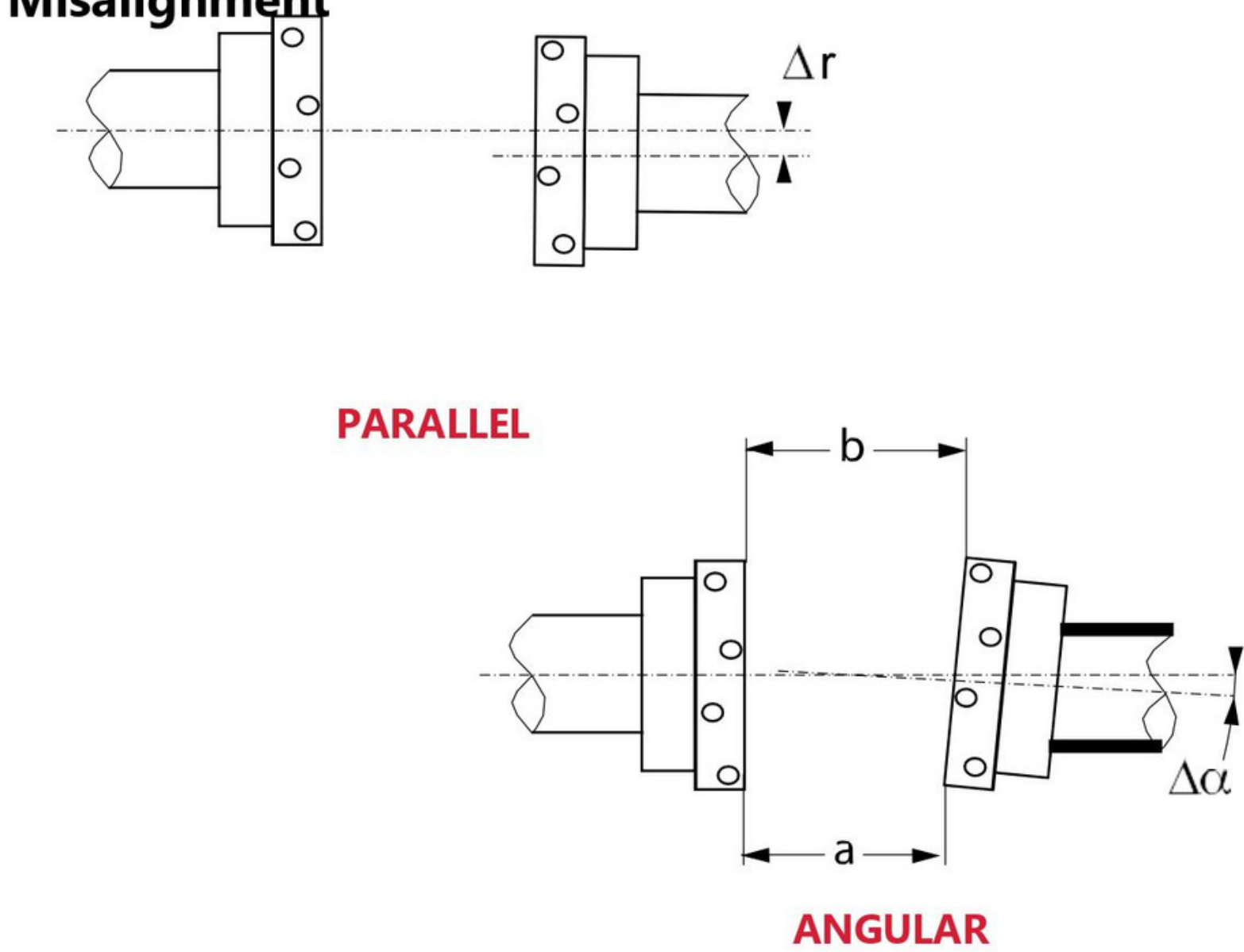
# REXNORD OMEGA AND VIVA COUPLING FAMILY

<p><b>Omega Standard Orange</b></p> 	<p><b>Omega Heavy Duty Yellow (HDY)</b></p> 	<p><b>Omega Hydrolytically Stable Urethane Green (HSU)</b></p> 	<p><b>Viva</b></p> 
<ul style="list-style-type: none"><li>- General purpose applications requiring the highest misalignment capacity</li><li>- Available with imperial or metric capscrews</li></ul>	<ul style="list-style-type: none"><li>- 25% greater torque capacity over Omega Standard Orange allows for possible downsizing</li><li>- Available with imperial or metric capscrews</li></ul>	<ul style="list-style-type: none"><li>- Ideal in hot or humid conditions in addition to acidic or alkaline environments</li><li>- Anti-corrosive shoe coating available (HSU-J) for use in highly caustic environments</li><li>- Available with imperial or metric capscrews</li></ul>	<ul style="list-style-type: none"><li>- The most torque-dense elastomeric coupling available allows for possible downsizing</li><li>- Hubs with two rows of radial holes grant more spacing adjustability</li><li>- No special hubs or sleeve extensions needed for extra wide shaft gaps (up to 300mm)</li></ul>

*The Elastomeric Benchmark for over 45 years!*



Allowable Misalignment



**NOTE:** Omega Standard Orange, Omega HSU, and Viva maintain their service life for any combination of parallel and angular misalignment measurements which fall on or below the line of the respective size. For Omega HDY, permissible misalignment values are shown in the yellow region and below the corresponding coupling size dotted line.

Coupling alignment is directly related to smooth, efficient equipment operation. Care should be taken for best possible alignment.

For more product information, refer to the Rexnord Omega and Viva catalogs located in the documentation section of [www.rexnord.com](http://www.rexnord.com).

- Omega catalogs: [4000](#) (imperial) & 4000\_M (metric)
- Viva catalog: [4044ENESFR](#)(metric)

Torque Ratings

Omega Standard Orange & HSU (Size)	Omega HDY (Size)	Viva (Size)	Torque Rating	
			(lb-in)	(Nm)
2	...	...	190	22
...	2	...	238	28
3	...	...	365	41
...	3	...	456	51
4	...	110	550	62
...	4	...	687	78
5	...	125	925	105
...	5	...	1,156	131
10	...	130	1,450	164
15	...	...	1,800	204
...	10	...	1,812	205
...	...	150	2,210	250
...	15	...	2,250	255
20	...	...	2,300	260
...	...	170	2,720	308
...	20	...	2,875	325
30	...	190	3,650	412
...	30	...	4,563	515
40	...	...	5,500	622
...	...	215	5,860	662
...	40	...	6,875	778
...	...	245	8,300	938
50	...	...	7,650	864
...	50	...	9,563	1.080
60	...	290	12,500	1.412
...	60	...	15,625	1.765
...	...	365	28,320	3.200
70	...	...	22,125	2.486
...	70	...	27,656	3.108
80	...	...	39,500	4.463
...	80	...	49,375	5.579
...	...	425	49,380	5.580
...	...	460	55,490	6.270
100	...	...	85,050	9.605
...	100	...	106,312	12.006
120	...	...	170,100	19.221
...	120	...	212,625	24.026
140	...	...	340,200	38.442